



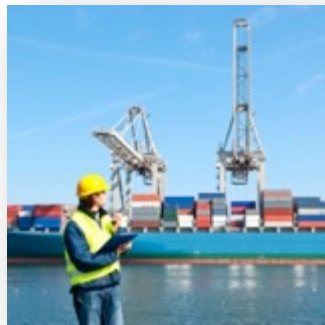
Customer Focused. Creative Solutions. Community Driven.

PEOPLE Meet Your Team





Creating confidence through our 3-C Culture



Creative Solutions:

Team members are handpicked and empowered to determine the best mode of transportation for client cargo.



Customer Focused:

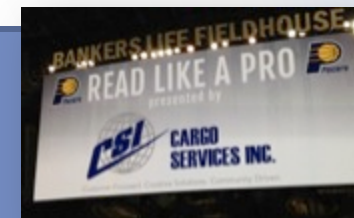
Meet Angie Cote. She supports the import team.

Her welcoming voice is the first you hear when calling Cargo Services. We do not have voicemail to ensure clients receive answers to their questions and needs on the first call.

Community Driven:

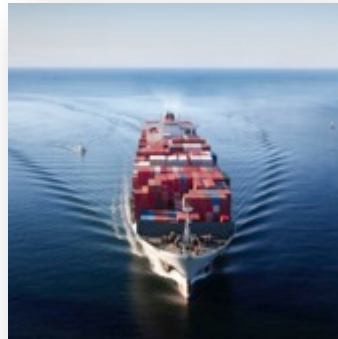
Supporting Indiana youth and foster children with the support and education needed to become successful.

Title sponsor of NFL Colts Books for Youth & Indiana Pacers Reading Time Outs.





Professional and tenured team with more than 700 years of experience provides **turnkey international import and export** freight forwarding by **air, sea and land**.



Globally networked with hundreds of professionals in more than 80 countries.

Customs brokerage, warehousing and distribution services available.

**Cargo Services
Independently
Owned and
Operated**

**Owners with more than 90 years of
combined industry experience**



John Rowe
Managing Director
In industry since 1984
With CSI since 1992



Steve Fugate
CFO
In industry since 1988
With CSI since 1992



Will Batton
Director and Owner
In industry since 1981
With CSI 1992



Business Development

Nearly 200 years
of industry
expertise and
customer service



Steve Klinger

In industry since 1978
At CSI since 2001

Jefferson Clay

In industry since 1998
At CSI since 2012



Stan Moore

In industry since 1971
At CSI since 2004

Don Bybee

In industry since 1974
At CSI since 2014



Susan Trautman

In industry since 2010
At CSI since 2013



Air Export & Special Projects Team

Nearly 100 years of combined
industry experience.



Tom Hansen

In industry since 1973
At CSI since 2004

Tina Mora

In industry since 2003
At CSI since 2008



Brian Pollard

In industry since 1987
At CSI since 1996

Garry Smith

In industry since 1995
At CSI since 2012



Cargo Express Team & Warehousing

More than 100 years in the
freight forwarding industry



Bill DeFord
In industry since 1976
At CSI since 2000

Mike Hutchings
In industry since 1988
At CSI since 1994



Tony Wooters
Warehouse Manager
At CSI since 1995

Tom Lecrone
In industry since 1996
At CSI since 2000



Import Operations Team

More than 100 years
of combined expertise
managing client cargo.

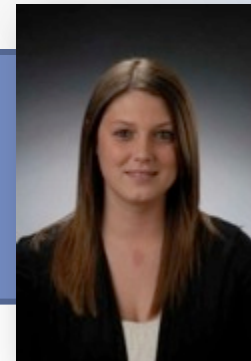


Diana Kepler
U.S. Customs Broker

In industry since 1977
At CSI since 2005

Amber Cox

In industry since 2010
At CSI since 2011



Patty Maxwell

In industry since 1987
At CSI since 1993



Import Operations Team



Letitia Irwin
In industry since 2013
At CSI since 2013

Rhonda Sappington
In industry since 1997
At CSI since 2004



Ocean Operations

More than 120 years
combined experience
and knowledge.

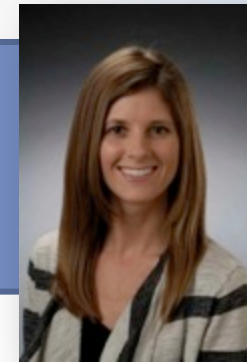


Barbara Islas

In industry since 1990
At CSI since 1995

Emily Osborne

In industry since 2005
At CSI since 2012

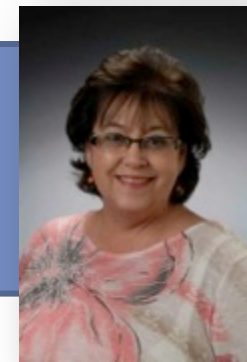


Marielle Wilson

In industry since 1996
At CSI since 2002

Beckie Daily

In industry since 1976
At CSI since 2006



Ocean Operations (Continued)



Jim Clark
In industry since 1986
At CSI since 2006

Chris Mora
In industry since 1990
At CSI since 2011



Teresa Braeger
In industry since 1995
At CSI since 1997



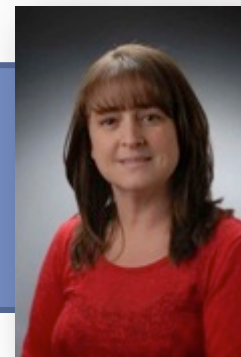
Accounting & Administrative

Nearly 10 years of combined
experience and knowledge.

Ashley Wilson
At CSI since 2013



Shauna Leo
At CSI since 2006





Our customer say....

"It didn't take long to realize (the Cargo Services) team is the better choice among professional freight forwarders. If we ever have a problem, the owners are available to help make decisions for a fast resolution... the solution is immediate." **Haynes International**

"When I schedule a shipment I know everything will be taken care of..." **American Timbex**

"Cargo Services is very customer oriented...when I schedule a shipment I know that everything will be taken care of and I do not have to worry about it"
Sud-Chemie

"We like doing business with a likeminded company that values hard work and reliability"
Crown Battery





Call now to tell us about your supply
chain management requirements.
800-645-0386

